



# Colorado Natural Areas Program Update: Plants of Greatest Conservation Need, Recovering America's Wildlife Act, & More

Colorado Rare Plant Symposium  
September 16, 2022  
Longmont, CO



Raquel Wertsbaugh  
Colorado Natural Areas Program Coordinator  
[raquel.wertsbaugh@state.co.us](mailto:raquel.wertsbaugh@state.co.us)

# 45 Years of CNAP

---

- Housed within Colorado Parks & Wildlife, created by Colorado Natural Areas Act of 1977
- 95 designated State Natural Areas across Colorado
- Recognizes and helps protect significant natural features across all landownership types
- Only state government agency program with a focus on rare plant conservation

Learn More! Story maps, volunteer program, rare plant resources, etc.

<https://cpw.state.co.us/aboutus/Pages/CNAP.aspx>







# State Wildlife Action Plan- Plants of Greatest Conservation Need

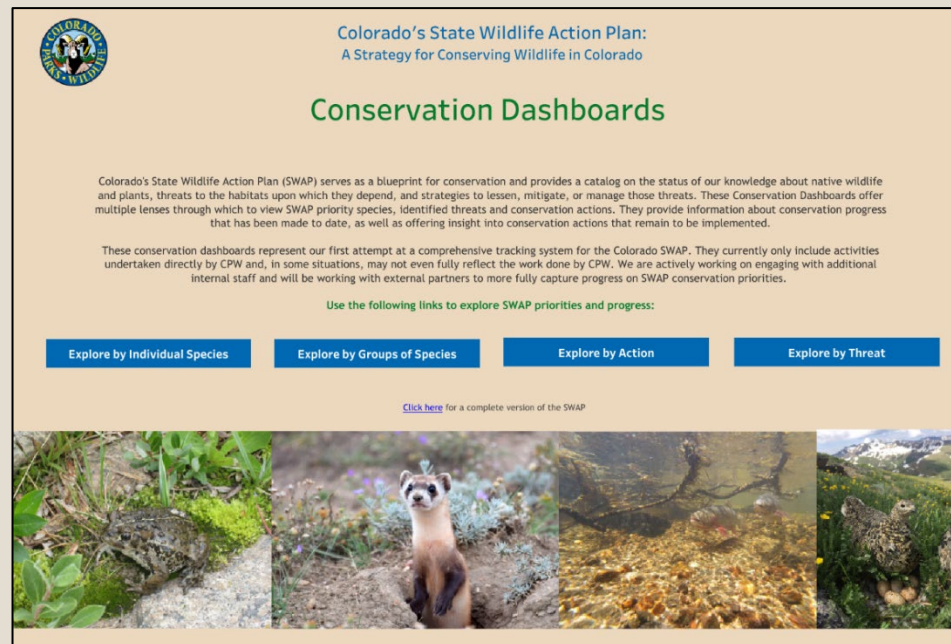
---

- CNAP's rare plant work is guided by the 2015 State Wildlife Action Plan (SWAP) rare plant addendum
- Rare plant addendum contains:
  - Plants of Greatest Conservation Need (PGCN)- Tier 1 & Tier 2 lists
  - Key habitats, threats, conservation priorities, conservation actions
- CNAP works collaboratively with partners to implement conservation actions for PGCN




# Conservation Dashboards

- CPW recently released conservation dashboards for SWAP conservation action implementation progress
- Tier 1 plants included (work accomplished/supported by CPW/CNAP)
- <https://cpw.info/conservation-dashboards>



The screenshot shows the 'Conservation Dashboards' page from the Colorado State Wildlife Action Plan. At the top left is the Colorado State Wildlife logo. The main heading is 'Colorado's State Wildlife Action Plan: A Strategy for Conserving Wildlife in Colorado' followed by 'Conservation Dashboards' in green. Below this is a paragraph explaining that the SWAP serves as a blueprint for conservation and provides a catalog of knowledge about native wildlife and plants, threats to their habitats, and strategies to address them. The dashboards offer multiple lenses to view SWAP priority species, threats, and conservation actions. A second paragraph states that these dashboards represent the first attempt at a comprehensive tracking system for the SWAP, currently including only activities undertaken directly by CPW, and that they are actively working with external partners to improve them. Below the text are four blue buttons: 'Explore by Individual Species', 'Explore by Groups of Species', 'Explore by Action', and 'Explore by Threat'. At the bottom, there is a link to 'Click here for a complete version of the SWAP' and a row of four images: a frog, a prairie dog, a stream with fallen branches, and a bighorn sheep.

 Colorado's State Wildlife Action Plan:  
A Strategy for Conserving Wildlife in Colorado

## Conservation Dashboards


Colorado's State Wildlife Action Plan (SWAP) serves as a blueprint for conservation and provides a catalog on the status of our knowledge about native wildlife and plants, threats to the habitats upon which they depend, and strategies to lessen, mitigate, or manage those threats. These Conservation Dashboards offer multiple lenses through which to view SWAP priority species, identified threats and conservation actions. They provide information about conservation progress that has been made to date, as well as offering insight into conservation actions that remain to be implemented.

These conservation dashboards represent our first attempt at a comprehensive tracking system for the Colorado SWAP. They currently only include activities undertaken directly by CPW and, in some situations, may not even fully reflect the work done by CPW. We are actively working on engaging with additional internal staff and will be working with external partners to more fully capture progress on SWAP conservation priorities.

Use the following links to explore SWAP priorities and progress:

[Explore by Individual Species](#) [Explore by Groups of Species](#) [Explore by Action](#) [Explore by Threat](#)

[Click here](#) for a complete version of the SWAP



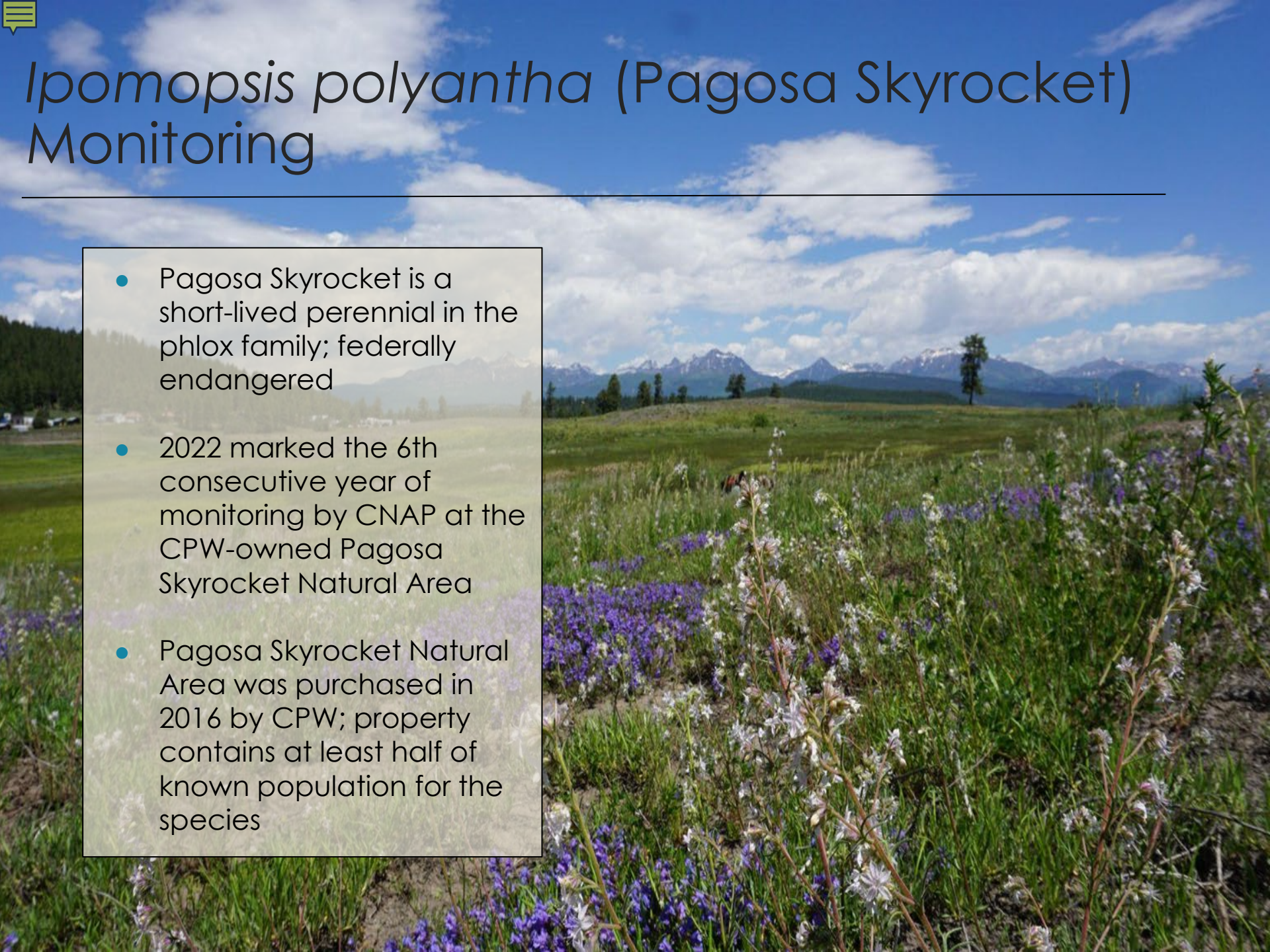




# *Ipomopsis polyantha* (Pagosa Skyrocket) Monitoring

---

- Pagosa Skyrocket is a short-lived perennial in the phlox family; federally endangered
- 2022 marked the 6th consecutive year of monitoring by CNAP at the CPW-owned Pagosa Skyrocket Natural Area
- Pagosa Skyrocket Natural Area was purchased in 2016 by CPW; property contains at least half of known population for the species





# How We Monitor Pagosa Skyrocket

---

- Property wide monitoring- estimate # of plants on property year to year
- Density data collection at two permanent macroplots- quantitative trend over time
- Demographic monitoring of individual plants- learn about life history
- Continuous data collection on soil temperature and moisture- learn about environmental conditions
- Repeat photo monitoring at 21 points throughout property



# 2022 Preliminary Results

---

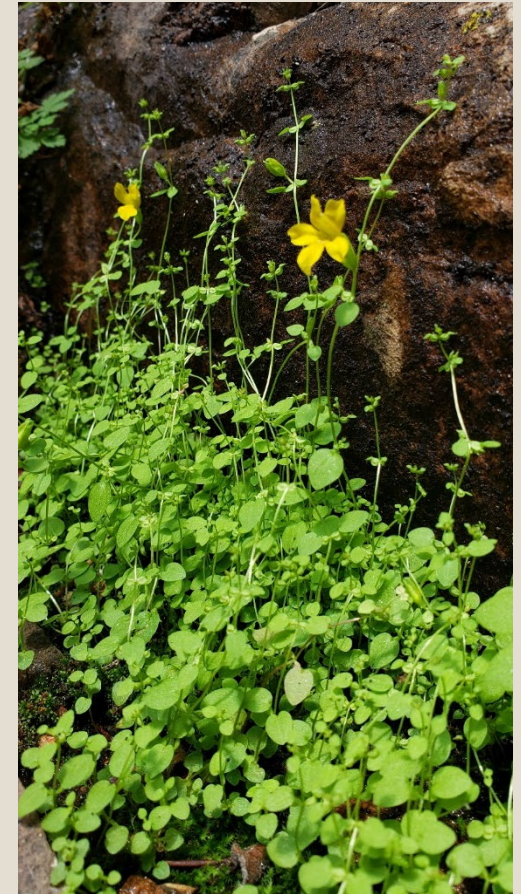


- Overall trend generally stable since monitoring began, with significant inter-annual variation
- Property-wide plant numbers slightly lower than past years (~522,000 estimated)
- Much higher proportion of adults to juveniles in 2022
- Spring moisture was almost non-existent this year
- Future analysis will tie climate data to density data to provide insights into climate drivers of plant trend



# Budding Monkeyflower Monitoring

- Continued monitoring by Mark Beardsley of native and established populations at State and USFS managed sites
- Overall trend appears stable
- Two populations saw downward trends this season
- Patch size, bulbil production continues to vary greatly between sites
- Recent genetic findings highlight importance of protecting this species & further research





# Project Coordination with CNHP

---

CNAP continues to partner with CNHP on:

- Parachute penstemon monitoring at Logan Wash Mine State Natural Area
- Brandegees' wild buckwheat monitoring at Droney Gulch State Natural Area
- Cushion bladderpod monitoring at Miramonte State Natural Area
- Various species surveys & revisiting EO's
- Data development of T&E
- Species distribution modeling on PGCN
- Updates to Colorado Rare Plant Guide







# Recovering America's Wildlife Act

---

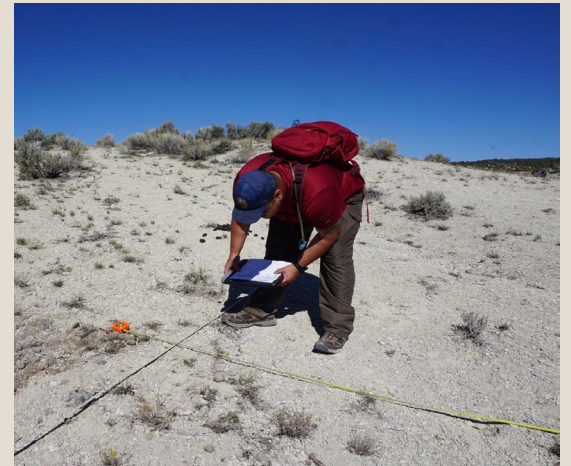
- "RAWA" = federal legislation that would provide \$1.3 billion annually to state wildlife agencies to implement federally approved State Wildlife Action Plans
- What does this mean for CO? CPW could receive \$24 million for SGCN and \$1.2 million ANNUALLY for PGCN
- Waiting for senate floor vote, 40+ senate co-sponsors, bipartisan support
- Colorado is 1 of 18 states approved for plant \$ appropriation due to rare plant inclusion in our SWAP (thanks to RPCI efforts)!



# Volunteer with CNAP

---

- CNAP is recruiting independent, dedicated volunteer stewards to monitor State Natural Areas
- Volunteers with botany experience strongly encouraged to apply
- Locations across the state, many of them in remote areas
- Sites vary in monitoring needs, accessibility, & location- talk to staff to learn more
- Contact: [dnr\\_cnap@state.co.us](mailto:dnr_cnap@state.co.us)  
<https://cpw.state.co.us/aboutus/Pages/CNAP-GetInvolved.aspx>





# Questions?

---

Raquel Wertsbaugh,  
CNAP Coordinator:  
[Raquel.wertsbaugh@state.co.us](mailto:Raquel.wertsbaugh@state.co.us)

All CNAP staff:  
[dnr\\_cnap@state.co.us](mailto:dnr_cnap@state.co.us)

CNAP Website:  
<https://cpw.state.co.us/aboutus/Pages/CNAP.aspx>

